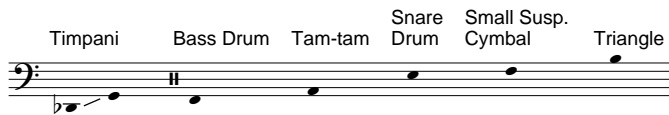


Cristian Lolea
2010

Ensemble:

Flute 1/ Piccolo 1/ Alto Flute
Flute 2/ Piccolo 2
Clarinet in B \flat / Bass Clarinet in B \flat
Soprano Saxophone/ Alto Saxophone
Baritone Saxophone
Horn in F
Trumpet in B \flat
Trombone 1
Trombone 2
Tuba
Percussion (one player):

Timpani
Glockenspiel
Bass Drum
Small Suspended Cymbal (Splash)
Triangle
Tam-tam (100 cm diameter)
Snare Drum (or Timp. if no S.D. available)



Piano
Electric Guitar
Electric Bass

written for the Warsaw Autumn Festival
and Orkest De Erepijs

to my girls

Score in C

2010

Cristian Lolea
(2010)

Mecanico; ♩ = 75

Flute 1

Flute 2

Clarinet in B \flat

Soprano Saxophone

Baritone Saxophone
p sempre

Horn

Trumpet in B \flat

Trombone 1

Trombone 2
p sempre

Tuba
p sempre

Percussion
Bass Drum
damped, soft mallet
p sempre

Piano
poco p

Electric Guitar

Electric Bass
p sempre

*) Bass Octaver
(effect only)

* sounds two octaves lower than written

♩ = ♪ = 150

6

Fl. 1

Fl. 2

Cl.

S. Sax.

B. Sax.

Hn.

Tpt.

Tbn. 1

Tbn. 2

Tba.

Perc.

Pno.

E. Gtr.

E. Bass

(p)

(p)

(p)

(p)

(B.D.)
(damped)

ord.
secco
at the center

near
the rim

mp

p l.v.

poco p

più p

♩ = ♪ = 150

$\text{♩} = \text{♩} = 75$

11

Fl. 1 *ben f*

Fl. 2 *ben f*

Cl. *ben f*

S. Sax. *ben f*

B. Sax.

Hn.

Tpt. *straight mute*
mp *n*

Tbn. 1

Tbn. 2

Tba.

Perc. Triangle (l.v.) *mp* B.D. *ord. damped* *p*

Pno. *poco p* *poco p*
8^{va} ↓ *8^{va} ↓*

E. Gtr.

E. Bass

$\text{♩} = \text{♩} = 75$

15 $\text{♩} = 150$ $\text{♩} = 75$ $\text{♩} = 150$

Fl. 1 *f dolce*

Fl. 2

Cl. *dolce*
mp *n*

S. Sax. *f dolce*

B. Sax. *p* *poco p* *f* *sub. p*

Hn. *p* *poco accel.* *molto* *ben f*

Tpt.

Tbn. 1 *mp dolce* *pp* *gliss. lent.*

Tbn. 2 *p* *mf* *pp* *gliss. lent.*

Tba. *p*

Perc. *Small Suspended Cymbal* *drumstick* *mf* *ff* *B.D. damped, soft mallet* *p* *Trg.* *Snare Drum rubbed with brushes (ossia: Timp. - high pitched, if S.D. unavailable)* *mp*

Pno. *L.H.* *mf* *R.H.* *8^{va}* *poco p* *8^{va}* *mp* *poco f*

E. Gr.

E. Bass (Bass Octaver) *p* *mf* *mp* *p*

20 *ben*

Fl. 1 *ben f*

Fl. 2 *ben articolato*
mp *ben f*

Cl. *ben articolato*
mp

S. Sax. *ben f*

B. Sax.

Hn. *poco f*

Tpt. *(straight mute)*
poco f

Tbn. 1

Tbn. 2

Tba.

Perc. *mf*

Pno.

E. Gtr.

E. Bass

♩ = ♩ = 75
to Picc.

♩ = ♩ = 150

23

Fl. 1

Fl. 2

Cl.

S. Sax.

B. Sax.

Hn.

Tpt.

Tbn. 1

Tbn. 2

Tba.

Perc.

Pno.

E. Gr.

E. Bass

poco p

p

to Picc.

to Alto Sax.

p dim. poco a poco

(p)

mp

pp

mp <

senza sord.

mp dolce

pp

mp

pp

(p)

(p)

(p)

(S.D.) (rubbed)

p

mf

(hit)

poco p

mp (loco)

8^{va} 1

8^{va} 1

♩ = ♩ = 75

♩ = ♩ = 150

(Bass Octaver)

(p)

28

Piccolo

Fl. 1

Fl. 2

Cl.

Sax. Alto Saxophone

B. Sax.

Hn.

Tpt.

Tbn. 1

Tbn. 2

Tba.

Perc. Timpani

Pno.

E. Gtr.

E. Bass

ppp

ben f *poco f* *ben f* *poco f* *sim.*

poco p *f* *ben f* *poco f* *ben f* *poco f* *sim.*

molto *ben f* *sf* *cuivré*

straight mute *poco f*

f *sf* *sf*

f *sf* *sf*

f *sf*

mf *ben f* *gliss. lent.* *mf*

mp *f* *ben f* *8^{va}* *(loco)*

mp *mf* *ben f*

ff *ff*